



Annual Report 2025 - 2026

St Lawrence Hatfield

Administrative Details

Legal Name: **The Benefice of Hatfield St Lawrence**

Registered charity number: **1127942**

Address for correspondence: **The Parish Office, 3 Vicarage Close, Hatfield, Doncaster, DN7 6HN.**

Elected Trustees during the year

Alan Moses

Sharron Dilks

Mobolaji Daramola

Ben Cragg

Glynis Smith

Mark Johnson

Senette Wroot

Pauline Coe

Shaun Holt

Officers & Staff

The Revd Chris Bishop – Vicar of Hatfield,
Incumbent & Chair

The Revd Gill Salter – Associate Priest

The Revd Chris Wroot – Assistant Curate
Chrissy Grindle – Churchwarden

Terry Raper – Warden & Buildings Officer

Shaun Holt – Secretary

Julie Hemmings – Treasurer *

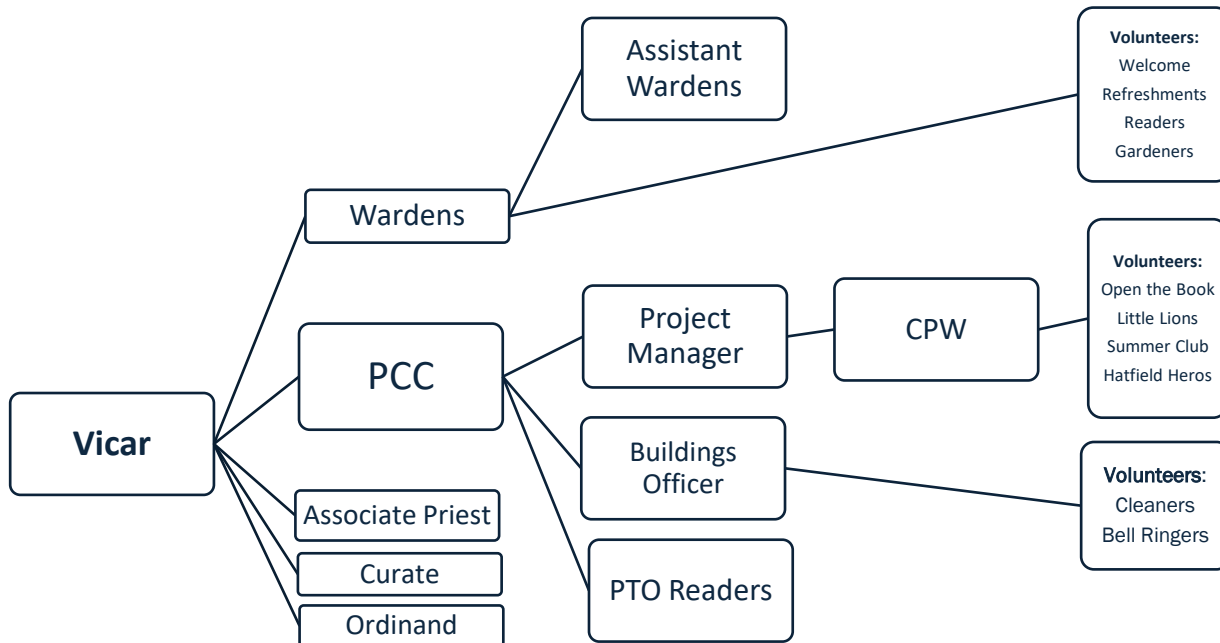
Rosh Milner – Project Manager *

Rachel Ridler – Centenary Project Worker *

Viv Stubbs – Safeguarding Officer

**The following attend PCC meetings as non-voting members*

Structure, Governance & Management



- The Vicar holds spiritual and pastoral oversight of the church's worship, teaching, mission & administration. He convenes & chairs bi-monthly meetings of the PCC.
- The PCC are the Charity Trustees & are responsible for finance & buildings. They support & co-operate with the Vicar in the Mission of the Parish.
- The Vicar is supported & cared for by the Wardens Team. They meet monthly for practical & logistical planning. The Elected Wardens have responsibility for the building & its contents.
- The Vicars Staff Team consists of Licensed Clergy & paid staff. Staff Meetings for reflection & planning are held twice a month.
- The Vicar meets with the PTO (permission to officiate) Readers each month for reflection & mutual support.
- St Lawrence is a training Parish. The Vicar is responsible for those who are in training & meets with the Curate & Ordinand separately every other week.
- The Vicar holds responsibility for all mission & ministry & meets with the CPW each month for prayer & reflection.

Finance Team

Incumbent

Treasurer

PCC Secretary

Churchwardens

Barn Extension Team

Incumbent

Project Manager

Buildings Officer

Co-opted Members:

*Vera Owen, Pete Wyatt,
& Andy Green*

The above teams meet monthly and report back to the PCC.

Safeguarding

Safeguarding remains a central part of our life and ministry at St Lawrence. As a parish, we are fully committed to creating a church community where everyone especially children, young people, and adults who may be vulnerable are welcomed, valued, and kept safe. This is not simply a legal duty; it is an expression of our Christian calling to love our neighbour and honour the dignity of every person.

Throughout the year, the PCC has continued to follow the House of Bishops' safeguarding guidance and the Diocesan policies. The PCC has appointed a Parish Safeguarding Officer, who works closely with the clergy, churchwardens, and diocesan safeguarding team to ensure that our procedures are robust and up to date. Regular reviews of our safeguarding practice have taken place, including safer recruitment checks, DBS renewals, and ensuring that volunteers and leaders complete the required safeguarding training.

Safeguarding is a standing item at PCC meetings, and the PCC has confirmed that it has had due regard to the House of Bishops' guidance in all safeguarding matters. Any concerns raised during the year have been handled in line with diocesan procedures, with advice sought promptly where needed. We are grateful to all those who serve in ministries involving children, young people, and vulnerable adults, and who take their responsibilities seriously.

Their care, attentiveness, and willingness to follow best practice help make St Lawrence a safe and welcoming place for all who come through our doors.

The PCC remains committed to fostering a culture of safety, transparency, and accountability, and to ensuring that safeguarding continues to be woven into the everyday life and mission of our parish.

Objectives & Activities

The PCC exists first and foremost to **advance the Christian faith in the parish of Hatfield**, and everything we do flows from that calling. This is the heartbeat of our life together at St Lawrence.

Our purpose is to help people encounter Jesus Christ, grow as disciples, and live out their faith in ways that bless our community.

We believe the gospel is good news for everyone, and so our ministry is intentionally **open, welcoming, and outward-looking**.

Through our worship, pastoral care, teaching, community events, and partnerships across Hatfield, we seek to share God's love in word and action. Whether it's a Sunday service, Café Church, Little Lions, Lawrence's Place, youth ministry, school links, or the quiet ministry of prayer, each part of our life together serves this wider purpose.

Advancing the Christian faith also means **servicing the people of Hatfield with compassion**, standing alongside the lonely, the struggling, and the overlooked. It means being a church that reflects the generosity of God, offering hospitality, hope, and a place to belong. It means nurturing faith in all ages, encouraging people to explore Christianity, and helping one another grow in confidence as followers of Jesus.

As a PCC, we are committed to stewarding our resources: our building, finances, volunteers, and gifts so that St Lawrence can continue to be a beacon of Christian witness in this parish. Our charitable purpose is not static; it calls us to be **creative, prayerful, and courageous** as we discern how God is leading us in the year ahead.

In all things, our aim is simple: **to help people in Hatfield know Christ, love Christ, and follow Christ and to see our parish transformed by His grace.**



Patterns of Worship & Ministry

Day	Time	Service / Activity	Frequency
Sunday	8:30am	BCP Holy Communion	4th Sunday
Sunday	9am	Parish Breakfast	4th Sunday
Sunday	10:00am	Choral Communion	Every Sunday
Sunday	4:00pm	Café Church	1st & 3rd Sundays
Sunday	6:30pm	Monthly Worship Night	3rd Sunday
Sunday	6:30pm	Hatfield Heroes Youth Group	2nd & 4th Sundays
Monday–Thursday	9:15am	Morning Prayer	Daily
Wednesday	10:00am	Said Eucharist	Weekly
Wednesday	11:00am	Open Church	Weekly
Thursday	3pm	BCP Holy Communion	Weekly
Thursday	1:00pm	Little Lions Toddler Group	Weekly (term time)
Saturday	9 - 12	Lawrence's Place Community Café	1 st Saturday

At the heart of our life together is our **Sunday worship**, where people of all ages gather to pray, learn, and be shaped by Scripture & the living tradition of the church. Our 10am Choral Communion continues to offer a rich, reverent, and accessible expression of Anglican worship, while Café Church has created a relaxed, conversational space where newcomers, families, and those exploring faith can engage with the gospel in a fresh way. The 8:30am BCP service and our monthly Worship Night have each provided different pathways for people to deepen their discipleship.

Our **weekday ministries** have helped us live out our faith beyond Sundays. Morning Prayer has anchored our life in daily prayer for the parish. The Wednesday Eucharist and Open Church have offered a place of welcome, stillness, and pastoral support. Little Lions has connected us with young families, many of whom have no other link with church, and Lawrence's Place Community Café has become a joyful expression of Christian hospitality, building friendships and reducing isolation.

We have also invested in **children's and youth ministry**, with Hatfield Heroes providing a safe, faith-filled environment for young people to explore Christian faith, ask questions, and build confidence. Our links with local schools have continued to open doors for sharing the Christian story with hundreds of children each term.

Pastoral care has been another key way we have furthered our aims. Home visits, funerals, baptisms, weddings, and informal conversations have all allowed us to share Christ's compassion with those facing grief, loneliness, or major life transitions. Our clergy and volunteers have offered prayer, presence, and practical support to many across the parish.

Throughout the year, our building has remained a visible sign of Christian witness in the heart of Hatfield. By keeping the church open, welcoming, and well-used, we have ensured that St Lawrence continues to be a place where people can encounter God, find peace, and feel part of a wider community.

In all these ways, through worship, prayer, teaching, hospitality, pastoral care, and community engagement, the activities of St Lawrence have furthered the PCC's purpose. Together, they reflect our desire to be a church that is **rooted in Christ, growing in faith, and reaching out in love** to the people of Hatfield.

Public Benefit Statement

The PCC confirms that, in planning and carrying out all of its activities throughout the year, it has had full regard to the Charity Commission's guidance on public benefit. In all our worship, pastoral care, community engagement, and use of resources, we have sought to ensure that the life and ministry of St Lawrence Church serves the whole community of Hatfield, offering welcome, support, and Christian witness to all who live, work, and visit here.

A Word From the Vicar

Friends,

As I look back over this past year, I am filled with gratitude. Gratitude for people, for grace, and for the unmistakable work of Jesus Christ among us. This has been a year where the Lord has gently but unmistakably drawn us deeper into His mission, strengthened our safeguarding culture, and grown us as disciples who long to see Hatfield encounter the living God. If there has been one theme running through our life together this year, it is this: **Jesus is making St Lawrence a well: a place where the thirsty can drink deeply of His life.** We have seen this in so many ways.

Lawrence's Place

What began as a simple idea has become a place of warmth, welcome, and genuine community. The buzz on Saturday mornings, the conversations, the laughter, the sense of belonging is not something we manufactured. It is the fruit of the Spirit at work among us. People who have never stepped into church before are finding a home here.

Mission Week

One of the highlights of our year. It was a week where we stepped out in faith, prayed boldly, and opened our doors and our lives to the parish. We visited homes, offered prayer on the streets, shared meals, listened to stories, and invited people to encounter the hope of Jesus. It reminded us that mission is not an event but a posture: **we go because Christ first came to us.**

A Missional Shift

We still have work to do in shifting from “come to us” to “we go to them.” But this year we have taken real steps: visiting homes, care settings, and those unable to attend church. strengthening our links with other local faith groups. offering prayer, presence, and practical help across the parish. More and more, people in Hatfield describe St Lawrence as: “warm, safe & caring”.

Safeguarding: A Gospel Commitment

Safeguarding has remained at the heart of our leadership and ministry. This year we have continued to embed a culture where safeguarding is not an administrative burden but a **gospel commitment**, a way of loving our neighbour and honouring Christ. Key developments include:

- every warden, PCC member, and volunteer completing or renewing training
- safeguarding scenarios discussed regularly at meetings
- clear expectations for all leaders and volunteers through Codes of Conduct
- a renewed emphasis on confidentiality, accountability, and transparency
- pastoral boundaries strengthened and modelled

Jesus calls His church to be a place of safety, dignity, and honour.
By God's grace, we are becoming that place.

Discipleship: Deepening Roots, Growing Faith

This year has seen a quiet but significant deepening of discipleship across the church. Our worship from the 10am Eucharist to the 4pm Family Service and everything in between is truly beginning to form us. We have worked hard to make our worship accessible, reverent, seasonal and joyful.

More people are praying aloud, praying for one another, and praying expectantly. Our intercessions are more rooted in mission, justice, and the needs of our community. Our growth groups are helping to shape us. People are asking deeper questions. Sermons are sparking conversations that continue long after Sunday. God is doing something here in Hatfield. Our story is being noticed. Our faithfulness is bearing fruit. And our small steps of obedience are part of a much larger movement of renewal across the Church of England.

Our Key Passage for the Year: Deuteronomy 6:4–12

As we look ahead, I want to introduce our **key Scripture for the coming year**: This passage known as the *Shema* is the beating heart of biblical faith. And I believe it is the word God is giving to St Lawrence for this season.

Why this passage? Because it calls us to:

- **remember** who God is
- **love** Him with our whole lives
- **teach** the next generation
- **live** our faith in our homes, our conversations, our decisions
- **guard** against forgetting the Lord in times of comfort or challenge

Hatfield needs a church that is **rooted**. A church that remembers. A church that loves God wholeheartedly. A church that passes on the faith with joy and clarity. A church that refuses to forget the Lord.

Throughout the coming year, we will be doing **deep work** on this passage: in sermons, growth groups, prayer, in our leadership, in our family ministry & in our mission

My prayer is that Deuteronomy 6:4–12 will shape us, steady us, and send us. We are not a perfect church. But we are a church in whom Christ is at work. And that is enough.

Thank you for your faithfulness, your generosity, your prayers, and your love. It is a privilege to serve as your Vicar.

To Christ be the glory, in this parish and in every heart.

Churchwardens Reflections

There is a formal role description for wardens, part of which says:

“Churchwardens at St Lawrence commit to serving as visible, reliable, and collaborative leaders who support the Vicar in the worship, witness, and wellbeing of the parish.

Wardens are “Foremost in representing the laity and in cooperating with the incumbent in the life and mission of the church.”

(Diocese of Sheffield Churchwardens’ Toolkit)

Wardens agree to uphold this calling with integrity, humility, and a heart for mission.”

No pressure then!

Throughout this year the wardens’ job has been made possible only through Pauline Coe, Tim Beadle and Steve Walton joining us in the team, and it’s a team which works very well together.

The pace of wardens’ life at St Lawrence has galloped with increasing speed, and the reason that it’s galloped is that our church is moving forward, in spiritual growth, in services and events, in outreach, and in all the **VERY** many jobs so willingly taken on by **so many** people to enable the church to run more smoothly. There is no way two or even five people can do that.

The main way we measure all this growth is by numbers at services which is countable, and that makes it easy to measure. It’s quite a simplistic measure to count people who turn up. But never forget that it’s only a result of these other growth developments that the number of people we actually see increases. What is not countable is the number of people who hear about God, maybe without realising, through social media, coffee mornings, social events, and through our chatting to friends about church. Our Lent group this year is all about “Talking Jesus” and gives wonderful guidance about how to “chat” to show people that you are a believer. This can be done as simply as telling how you go to Lawrence’s Place café to help out, how you take the little people in your life to Little Lions, how you won’t be home in time because -actually- you don’t want to miss a church service and coffee afterwards, and that is a priority for you.

We are the Bishop’s officers and are directly responsible to him. Each year we attend a service at which we give a written committal to the job for the coming year.

If you appreciate us at all please come to the service, it will be at Doncaster Minster on the evening of June 1st, it’s a real boost of support. So as church wardens we thank you all so very much for your truly invaluable parts in the “worship, witness, and wellbeing of the parish”.

Chrissy & Terry

Children Youth & Families Highlights

March 2025 - March 2026 has been another busy year, but with some significant changes within the children's and youth ministry. It has been really exciting to see so many new volunteers step up and take ownership of new and existing ministries, and the growth in numbers and spiritual depth too. In January I made the decision to reduce my working hours to focus on the youth, an area that God is really blessing at the moment.

Please join me in praying for all the ministries below and enjoy our highlights:

Café Church – We have seen some new families come to join our worshipping community at Cafe Church this year, including our first representative from this congregation on the PCC. We have explored the Sermon on the Mount and seen a change of time to afternoon early in 2025 and introduction of food.

Around half of the congregation each service is made up of children and young people, with many of our youth group enjoying this service. Numbers fluctuate between 20-60 but it is always a joyful time. In January I passed over leadership of this to the clergy team to take forward, and it's been exciting to see new ways of all-age worship being explored together. Highlights have included our first Cafe Church full immersion baptisms in June and celebrating communion together.



Hatfield Heroes Youth

Our youth group has grown enormously this year again, with average attendance around 18-20 young people, and up towards 30 on the register.

We have explored how as Christians we are different, finished our year on prayer, and started looking at a Bible Overview. On top of this, we have attended many Diocese and Doncaster Youth Hub events, including HOPE Weekend (when we painted the fence at Travis School and handed out blessing packs in the community), Wild Away Day and Breathe Deep at Sheffield Cathedral, where we had 19 young people take part (up from 14 last year).

We have really pushed in to developing our Young Leaders this year, encouraging them to lead small groups in our sessions and to join the Diocese Young Leaders Community.

Once again Jess stepped up to lead a workshop at Breathe Deep, instructing 50 young people on bread making prayers. Many of our group supported her in practical ways.



Summer Holiday Club

Our volunteer team once again grew, and this was a great team effort (from crafts, to games, to drama and sandwich making!). The children loved our space themed net of decorations and we were fully booked with 60 children every day (although a few left us for one day to watch Gladiators be filmed!).

Unfortunately our wet outdoor day just had to be an outdoor day due to the hosepipe ban, but we still had lots of fun!



Schools

Schools work has continued to be busy this year with all the regular collective worships in church, Christmas and Easter services and delivering It's Your Move session and Backpack Blessings during the year. Chris Wroot accompanied me on a few visits too, seeing the breadth of schools in our Parish. Me and Chris B worked with the worship council at Travis St Lawrence to deliver a "Walk through Easter Experience" in church this year, visited by all the Travis students.

One highlight has been the launch of our Open the Book Team, with training starting early 2025, and our first assemblies delivered in July. We have now settled into a regular pattern, visiting three of our local primary schools to act out Bible stories. The team have gelled really well together and are so supportive. They love creating new props and thinking how to make the stories come alive.



Finally, the doors at Ash Hill have opened even more this year as a new RE lead contact has been proactive in allowing me in to school. This led to us launching an after-school Youth Alpha Course with 8 young people taking part in Autumn Term, which has turned into a Christian Union Club which runs every Thursday. I also now go in on Thursday lunchtimes to the canteen to provide “pop-up prayer spaces” prompting questions and discussion with all the students about faith.



Little Lions Baby and Toddler Group – Little Lions had continued and the volunteer team has grown to include Joy, Abbie, Gill, Ben and Sarah. In September I was able to hand over the day to day running of this group to Joy and Abbie and it has been amazing to see how it has flourished under their creativity and leadership.



Other activities – Cuppa in the churchyard and Treats in the Churchyard continued to be well received, offering us opportunities to connect with new families in the community. This led to some new Baptism families coming into church, and lots of other positive connections.



Pre-Loved Uniform Bank – This continues to run and in January has dropped down to monthly but with a new click and collect service available for those who can't make the open sessions.

I am sure there is plenty I have forgotten or missed out, but it has been a joy to service the children, young people and families here. I am so happy that church has supported me in stepping back to focus on the youth, and God has provided amazing volunteers from our church family who have stepped up to fill the gaps.

Rachel.ridler@centenaryproject.org.uk

07851 991286

Befriend me on Facebook for regular updates on my work - “Rachel Youthworker”

Project Manager Round-up

Introduction

I have continued in engagement on behalf of the PCC on project managing various pieces of work. This has been rewarding, interesting and at times challenging but at all times the sense of openness, partnership and common vision has been present as we seek to further the Lord's work here at St Lawrence.

I am delighted to present my report for the year since the last APCM in April 2025. This report covers the more substantial and report worthy undertakings performed on behalf of the PCC during January - December 2025

Centenary Project

Line Management of CPW, including processing expenses , fundraising and networking emails and phone calls and supervision.

Finance

Work continues in close cooperation with our Treasurer.

Barn Regeneration

In January 2025 the PCC established a Barn Regen Steering Group. This has taken a large proportion of my time. We have met 10 times and worked between meetings by email , reporting to PCC for feedback and decisions and are nearing the stage where we have a final set of proposed plans for an extension to the current building fit for our church and community needs to go forward for a pre planning application.

Headers from PCC reporting

- Altar Linen and church consumables ordering
- CCTV and ALARM Systems Oversight
- Meetings with stakeholders and Business contacts/ reps
- Diocesan processes for maintenance and repairs
- Repairs and maintenance of church and environs and Architect projects
- Sound System Upgrade
- Representing us at Major Parish Church and similar National Networks
- Barn related items
- PCC AwayDay
- Charity Commission and governance compliance
- Church Explorers week
- i know church
- Event planning

Social & Fundraising Highlights

The social life of our church is not an optional extra, but a natural expression of our faith. From the earliest days, Christians gathered not only for worship and teaching, but also for fellowship and hospitality. In Acts of the Apostles we read that the believers “devoted themselves to the apostles’ teaching and the fellowship, to the breaking of bread and the prayers” (Acts 2:42). Our shared meals, celebrations, and community events are part of that same calling. Through them, we build one another up in love and open our doors to our wider community, creating spaces where friendships are formed and faith can be gently explored.

Over the past year, we have faithfully delivered the core elements of our social and fundraising calendar, other established events that continue to bring people together. These occasions not only raise vital funds to support the life and ministry of the church, but also strengthen our presence within the parish. They are moments of welcome, joy, and shared endeavour, where church and community meet naturally.

This year we have also taken a step further, seeking fresh and creative ways to connect. New initiatives such as our Valentine’s Day service and “Hymns and Pimms” have offered different points of invitation combining worship, music, and hospitality in ways that have been both joyful and accessible. These events have helped us to reach beyond our usual congregations and to demonstrate that church life can be both rooted in tradition and open-hearted in approach.

In September we launched Lawrence’s Place, which has been a fantastic success. Attendance has been consistently strong, with a wide range of people coming along. It has quickly become a valued gathering point, fostering community across generations. Our young people have played an active part, running events at each gathering, bringing energy, creativity, and a visible sign of the church’s commitment to nurturing the next generation. It has been deeply encouraging to see new relationships forming and a genuine sense of belonging developing.

None of this would be possible without our volunteers. Their generosity of time, skills, and enthusiasm is the key to our success. From planning and setting up, to baking, serving, welcoming, clearing away, and everything in between, they embody the servant-hearted spirit of Christ in practical ways. If anyone would like to help or be involved in any way, whether occasionally or more regularly, please do have a chat with Sennette Wroot. There is a place for everyone, and together we can continue to grow both our fellowship and our witness in the year ahead.

Sennette Wroot

Hatfield Church Garden Party – 2025.

Many thanks to everyone who helped with or attended and supported our Annual Garden Party on 5th July. Thank you to all the stallholders, and to many friends for helping to set everything up, and for clearing away afterwards. The day was most enjoyable and well attended, despite the wind this year eventually forcing our decision towards “Plan B” and holding the event entirely within Church again. (The fateful decision was eventually taken about 7.15, Saturday morning to move the event into Church, after the Gazebo’s we had already half erected flew across the Barn field, (And we had worried about rain all week, and actually - it remained fine!!)

Many thanks to Rev'd Chris for his opening speech, though it was difficult to hear over the noise of the crowd. The school display was especially good again this year, and still as popular as ever. Many thanks to Philippa and her team from Travis St. Lawrence, and we hope to see the return of Hatfield Woodhouse Primary and other schools next year, as they were unable to attend this year. It was unfortunate that the Stephanie Maskill School of Dance were unable to join us this year, but the McLeod Academy of Irish Dance did us proud despite their own numbers also being reduced through illness; both groups were enjoyed and highly complimented by many. Thanks also to the Markham Main Band who were able to join and entertained us exceptionally again this year.

Many people commented that they found the atmosphere to be a very friendly one. The afternoon teas were popular – as usual; the children's games were busy, and the mix of stalls too. Many people enjoyed watching and listening to the performances, others enjoyed a good chat and a catch-up, though this was more difficult in the tightly packed and noisier interior of the church. The amount taken on the day was **£2,337**; and after deducting all known costs, the profit from the event was just over £2000, all of which went towards General Church Funds. This is a wonderful amount, and one which was raised almost entirely within 3 hours! (Total includes an additional £30.00 of post event sales & donations).

It is also important to note that the event is not just about being financially successful and raising money, though the additional money raised is necessary to keep our church running. The Garden Party is also one of our major opportunities to meet and interact with the wider community, and it is important that we do this well, and give them something to enjoy and remember, so that they will come and join with us again.

I believe that it can be taken as a tribute to all the hard work and effort put in by all the stallholders, entertainment groups, and helpers, both on the day and in the weeks prior to the event that the Garden Party went according to plan and was so successful.

Once again, a sincere THANK YOU to all who have helped in any way with the organisation and running of any part of the Garden Party. Thank you also to all those who donated prizes or items for the stalls. we couldn't have done it without you. The final total is entirely due to the kindness and generosity of so many of our church and local community members (and some not so local) people.

It is extremely re-assuring to know that reliable help is available when planning events of this scale, and we are fortunate to have a large and regular team of helpers to call upon. A good day's work, helping to ensure our church will still be here in the foreseeable future. In order to fit in with Our Vicar's plan to host a "Garden Party" in the Vicarage Garden, later in July, the committee have agreed to hold next year's event on the last Saturday in June, and to re-name it as the St. Lawrence Summer Fayre.

We look forward seeing you all again at the St. Lawrence Summer Fayre – 27th June 2026.

The Garden Party Team.

Deanery Reps Round-up

Area Dean: The Revd Tim Mitchell **Deanery Secretary:** Ian Bishop

Lay Chair: Shaun Clarkson

This year's events have followed the traditional format of 3 synods in June, October and February, held in different parishes around the Deanery. Two followed the format introduced by our Area Dean of having an 'open' session, to which guest speakers were invited and where anyone can attend, followed by a closed business session for the representatives to ratify the minutes and receive reports and updates.

In June 2025, we met in the ancient church of Hook, which was being prepared for its 800 year celebrations. On this occasion, the synod agenda included two interesting and informative presentations. The first was by Elise Deput, a CPW and Church in Schools Learning Hub Leader and the second by Claire Sayce and Sian Checkley who navigated us through the CofE Safeguarding Dashboards.

The October synod was a twin Deanery Meeting (our deanery being twinned with Adwick) held in St Mary's Stainforth. We were all hoping to hear positive news for our parishes from Alex Shilkoff, the Diocesan Director of Development, who came to report on the outcome of the recent Diocesan bid for funding from the Strategic Mission and Ministry Investment Board. We learned that Bishop Pete has signed the Funding Agreement with national church for Phase 1 (2025-2028) of £14,313,044. The following information, taken from Alex's powerpoint presentation, is copied from the slide headed 'What does it mean for us*?'

* the Snath and Hatfield Deanery

- Access to all the Mission Area Support help, including grants for new congregations and lay worker roles
- Coaching and learning support for ordained and lay readers
- Young Leaders Community support
- 1 potential church to send a graft, partnership between Goole and Howden and the Diocese of York
- 1 potential new Centenary Project Worker location

Hopefully there will be more definite decisions and notifications shortly.

Our most recent Synod meeting was held in February 2026 at St John's Goole, where we were joined by Bishop Leah who had come to support us in celebrating the work of our lay Chair Shaun Clarkson.

However, prior to this, Bishop Leah spoke to us of the need to improve our 'listening posture' and she demonstrated how this could be developed through concentrating on and sharing a passage of scripture with others.

God was certainly present in the tributes to Shaun who is having to cut back on his workload. Our Area Dean and Hannah, the vicar of Goole, spoke of Shaun's long service to the Deanery and his strong Christian influence on the communities of Goole and the Marshlands. Following a presentation of gifts, he received a blessing from Bishop Leah, Tim and Hannah with the laying on of hands. Shaun has also been made an ex-officio member of our Deanery, with the invitation to attend any synod that he wishes.



This provides an excellent link-in to remind you that there will be elections at the forthcoming APCM for new Deanery representatives. I have been involved with the Deanery for over 20 years and would really recommend it. It has been so interesting and rewarding to meet up with fellow Christians from differing parishes in our area, as well as being kept up to date with the decisions made at Diocesan and General Synods.

May God bless our Deanery
Glenys Mashford Deanery Representative

The Year in Bricks Beams & Boilers! (Fabric Report)

The Diocese's suggestion of a "more creative title" as seen above, leads me to say - rather tongue in cheek, If you want to see a brick - you'd better head to the Crypt where the internal door was bricked up; (or you could go to the Barn, we do have bricks there)! The only boiler we own is the one that heats the water for your tea. Beams, we do have many in the roofs, but no one has physically touched any of those for years.

Andrew Boyce our architect did however come out to conduct our Quinquennial inspection on 8th May where he examined roof beams, internal & external walls, windows and accessible roofs, with the aid of binoculars. A drone survey followed on August 7th to look at in-accessible roofs & higher stonework. The video was fed back to Andrew to enable him to complete our QI report.

As I write, no report has yet been received despite numerous chasings from Rosh. He has however issued a statement to say, “the report will be forthcoming, but there is nothing catastrophic or of concern in either the survey or the drone footage, but there will need to be work carried out on another window in the South Aisle which has deteriorated significantly since the last QI”.

Rosh has also been chasing Andrew for progress on the projects to repair the window above the Devil’s Doorway, and the re-instatement of the Hatfield Monument. We received budget quotes from him in January 2025, and authorised both projects to start, hoping to complete them in 2025, but have seen no further progress from him. Recently Rosh has been working on the lengthy process of creating & collating all the necessary documents required for a successful faculty application. We now hope for completion during 2026.

The church intruder alarm was physically serviced on 24th July with sensors & battery voltage checked etc. The alarm also had a remote system check at 00.35 on 25th November, with a re-synchronising of timing clock & back-up of all data. Generally, it has caused no problems throughout the year.

The roof alarm was last serviced in November 2024, the 2025 service is currently booked for 20th March 2026. There have been no problems with rogue tripping this last year.

Problems viewing the camera outputs of the CCTV system were finally rectified in February, with Chris, Rosh & Tim now able to view images. The system should have been serviced in December, but the lone engineer despatched, couldn’t actually service it alone, A re-visit still needs to be arranged.

Our upright piano was retired in April and replaced with a second-hand Yamaha Clavinova from Travis St. Lawrence School.

Our main church organ was serviced and tuned in November, including a loose stop head being tightened at Vernon’s request. Vernon reported no other problems with the Organ during the year.

A new purple frontal and super frontal were ordered and delivered by Charles Farris Ltd for Lent 2025, unfortunately, the frontal top was short and slightly damaged, so they were returned for repair after Easter. We also ordered a Sanctus (white) frontal and superfrontal, and matching Pulpit falls and chalice veils for both sets.

Unfortunately, the Sanctus frontal was too wide when it arrived, so it again went back for re-sizing. Both frontals and superfrontals have since been received, but we still await the Pulpit falls and veils. The cost of all these is expected to be largely covered by the joint legacies of Cath Chaplin & Margaret Morris. The purple frontal has a dedication panel to Cath Chaplin, and the Sanctus frontal a dedication to Margaret Morris. We remember and thank them both for their service to our church, and for their legacies.

Our church clock was serviced in February, and has just been re-serviced on 2nd February for 2026, including the replacement of a link pin within the chiming mechanism. The clock itself has worked perfectly throughout the year. Some may have noticed that the light which should illuminate the clock is not working – we are currently in discussion with the DAC about renewing it – hopefully with an LED one!

Our lightning conductor circuits have just been re-examined, re-tested and re-certified, on 4th February 2026, by W.E. Harrison of Sheffield, and a re-test is not now due until July 2028!

All portable items of electrical equipment within the church, Barn & Parish Office were portable appliance tested on 20/10/25 by Fowlers Electrical.

The quinquennial fixed electrical inspection was last conducted on 13th February 2024 for both the church and the Barn and thus is not due again until February 2029.

The fire extinguishers within the Church, Barn & Parish Office were all checked on 3rd February 2025, and as I write these have just been re-checked again 13th February 2026, by Micro Alarms Ltd, a subsidiary of our electrical contractor Peter Fowler Electrical Ltd.

The heating system was serviced on 19th November, at the beginning of the current heating season, though it really should have been done earlier, as it didn't want to start up. The engineer came back in December & changed the starting transformer and it has worked well since then, (all-be-it that it simply working, doesn't necessarily mean you have all been warm enough).

Our heating system is quite expensive to run, so we have begun the process of looking at alternative systems. As part of this, on 28th January we had an Energy & Net Zero Carbon Audit, carried out by Greener Edge, and funded by Sheffield Diocese. The resultant report identifies short, medium and long-term recommendations to support decreasing energy consumption and moving towards decarbonising the heating system. We have also changed our energy supplier and have begun looking into a scheme to fit Solar Panels on Churches to reduce our electricity costs, and maybe even generate income.

The sound system has worked reasonably this year, all the better since we started using the new radio mics and the new shot-gun mics for the Pulpit and Lectern. These were purchased at the end of 2024 but not set up till last year. If anybody fancies driving the sound desk – it is not so hard! Please ask, full training will gladly be given.

The internet router, & with it the CollecTin & Sum-up card readers have generally worked well but occasionally get unplugged (to be mobile) and then not re plugged in again, thus draining the batteries.

Our last fire drill was held on the 19th of January 2025. We successfully evacuated the church within 1 min 40 seconds (Sunday 10.00 Communion service). A repeat drill for 2026 is intended for March.

A dropped slab, in the centre aisle towards the West end, and a couple of damaged stones around the Font, were lifted & replaced by Bridget Conservation in April. The £1,320.0 fee for these repairs was very generously paid for by the Hatfield Church Building Trust. The trust also paid for the gutter cleaning mentioned lower down.

We need to thank the Hatfield Church Building Trust, and the Friends for all that they do to raise money for our repair & refurbishment projects. For a while now they have been keen that we should undertake a specific project, so that they can be seen to make a substantial grant. Their wish is likely to be granted in 2026 as we make plans for the window repair and Hatfield monument repair, these 2 projects have a combined budget estimate of around £112,000.00. We will need to support them in their efforts to replenish their funds.

September 6th saw the launch of Lawrence's Place into our church events to be operated monthly. A grant from DMBC purchased a toaster, hotplate, coffee machines, two serving trollies and assorted crockery etc, all to help set up and run our community café. We also bought a fridge!

Unfortunately, on the first day we managed to overload the existing sockets in the kitchen, and a trailing lead from across the church, causing the circuit to trip. We have asked the Archdeacon's permission to install a new circuit with 2 x double sockets in the kitchen and await that permission. In the meantime, we currently exist with a couple of trailing leads from around the church and are slightly handicapped by the limitations of our electrical supply. We hope to receive the appropriate permission soon.

Other electrical repairs this year include – installation of a new PIR operated light in the toilet in November, after the existing light switch got broken. Replacement of the outside light near the West Door, and the isolator switch for the tea urn / boiler which failed in February. All were replaced for us by Fowlers Electrical. We also changed a single faulty light switch within the panel of 24 switches that failed in December. Unfortunately, the re-chargeable LED light that Andy Green fitted into the porch in February 2025 got stolen a few weeks later and this has not so far been replaced.

Regular church cleaning still takes place approximately fortnightly. There are still only two small teams, we need more help. We are now creating & dropping more food waste, which if left, attracts more mice. Please see a church warden & volunteer to start up a new team, we need to vacuum more often!

Chris has led a drive to de-clutter the church and to tidy cupboards and surfaces. This has also seen the removal & replacement of some of the furniture in the children's corner, the removal of the greetings card display, and the transfer of some of our chairs and tables into the Barn's shed, to free up more space at the back of church.

Christmas lights went up and down again onto the top of our tower. Still very popular & much mentioned, and still 100% working! Thanks to Andy Green, James Scott & Adrian Bagnel for helping with them. The church bells have been rung for weddings, services, and for VE & VJ day celebrations, with no problems. I had to replace 1 rope during the year – in May.

The Tolling bell has also continued to work well and has been in use before most services.

We bought 2 new flags, and blessed them this year, the St Georges Flag, blessed on 27th April & raised for St. Georges Day, & the Union Jack, blessed on 4th May and raised for VE day celebrations on 8th May.

The flagpole rope is becoming increasingly difficult to raise, and I need a team of helpers and a perfect day, to help me re-string it. I have already tried & abandoned it twice!

The 2 Belfry window guards that we repaired last year have held up well, but we haven't managed to return to similarly fix the other 6 window guards which unfortunately still employ props to keep them in place. We need to have another go – Volunteers required – must be able to get into the belfry, not scared of heights, and be prepared to get dirty!

We have renewed our church insurance in January, using Trinitas Insurance, achieving around a 32% saving on our premium over our previous insurer, Ecclesiastical Insurance, for broadly the same level of cover. We do need to re-do our security marking of valuables & metals (roof panels & lightening conductors etc). Trinitas are recommending "Selecta DNA" over "Smart Water" which we currently use.

There has been no requirement to renew the Loan agreement with the Royal Armouries, for our "Rare and Significant Church Armour", the current agreement stands until May 2027.

Our Churchyard team have done a sterling job again this year, mowing and tidying our churchyard (and Barn Field) to keep it clean and safe – in between the mowing done by Streetscene on behalf of the Town Council. Our team have also cleaned out the drainage gullies and traps of our rainwater system, including on Church Walk. Again, they need more help! If you feel you could volunteer, please ask and we will put you in touch with the team.

A new Rowan tree has been planted in the churchyard on the South side, this was donated by Doncaster Council, and sited by them, and is intended as the memorial tree that Margaret Mountain had requested a few years ago in memory of her husband Bernard.

Our York stone path on the South side of the church was reported for having loose and wobbly stones, gaps between the stones, and a potential tripping hazard. Rosh spent many hours arguing with Doncaster Council that it falls within their remit to make repairs. Despite being told that a surveyor from bereavement services would come to look at it in June, we still wait, now booked for March 4th. In August Rosh also mentioned some wobbly tombstones to check and possibly repose, and the fact that we had huge amounts of Black Nightshade, capable of making someone ill if the berries are eaten by mistake. We have also requested a re-paint of the white line edging for the steps leading to the car park.

A swarm of wasps had to be removed from our churchyard on 31st July, after they chose to “rest for the night” on our noticeboard near the carpark. Luckily, they were noticed and reported early, so that the public could be diverted around and nobody got stung. They were removed about 7pm that night.

The high-level gutters on the South Aisle were cleaned out by Gav the Gutter Man on 8th October, and the North side on 8th December (completed later to account for leaf fall).

In August we passed on the WW2 Memorial rescued from St. Edwins Church (Royal British Legion - memorial/299252). Apparently, it was originally in the Stainforth United Forces Club which was demolished; it was officially passed on to be re-housed on the wall of Stainforth Cemetery Chapel.

Our Barn is still in regular school day use by Kaydans Nursery, and occasionally by ourselves for meetings and coffee mornings etc. In August during the school holidays, we took the opportunity for a re-decoration of the main room and porch areas, and a deep clean for the toilet and kitchen.

I also mended the emergency exit latch on the emergency door. Later, the toilet, kitchen and porch were re-decorated over the weekend of 12th December.

Also, in August we suffered a break-in to both of our Barn garages, and the theft of a petrol mower and trimmer. We successfully claimed on our insurance and had both garage doors replaced on 3rd January by Zap Garage Doors, utilizing a stronger roller arrangement. For now, we haven't replaced the missing gardening equipment but expect to replace it with re-chargeable electric items of a similar size & power.

Throughout the last year, the Barn Regeneration sub-committee have been discussing and drawing up new plans for an extension to our Barn building. After a couple of tweaks, the preliminary plans have now been approved by the PCC and are due to go into pre-planning with DMBC in March.

The Parish Office is a building which we rent from the Diocese, we are responsible for fixtures, fittings & decoration. In February we employed Fowlers to replace the existing strip light with an LED one, after it gave out. In August, Andrew & Erica Adamson spent 2 days clearing the weeds around the office, the cobbles & onto the driveway. Thanks to them for that, it proved to be harder than anticipated.

I am unaware of any other work being done at the office this year, although one of the outside floodlights is also not working & requires replacement.

Our dedicated team of churchwardens have been putting together a “Calendar of Care” and have created a folder to house all maintenance / service reports & invoices, so that they can be tracked and actioned monthly as they come up for renewal, to ensure nothing gets missed.

Terry Raper – Buildings Officer

Financial Review

Bank balances as at 31st December 2025

St Lawrence Hatfield PCC Account.	£22,535.62
St Lawrence Barn Management Account.	£15,363.45
St Lawrence Barn Regeneration Account.	£33,198.75
St Lawrence Hatfield Organ Fund Account.	£0.00
St Lawrence Eliza Roe Account.	£4,234.40

St Lawrence Hatfield PCC Account – 31267655

Reconciled Bank balance as at 31 st December 2025.	£22,535.62
Designated/Restricted - see table below	£632.21
Available for PCC use	£21,903.41

St Lawrence PCC Account

The bank balance ended slightly down on the previous year to £22,535.62 due to the net loss of £216.58 in 2025.

The accounts are presented using cash-based accounting.

Income and expenses are recorded only when cash actually changes hands rather than when invoices are issued or received.

Income from cash envelopes was down by £645.25, banker's orders increased by £2,046.

Fees from services increased by £1,002.89.

Income from collections was down by £6,318.87 compared with 2024.

The commitment and hard work put into the fund-raising events and the refreshment team generated income of £9,491.58 in 2025. A number of events were held through the year, participants enjoyed concerts, the garden party, the yard trail, Christmas fayre, Christingle and several Carol services. The income included £1,478.41 from 2023 Christmas tree festival.

We are also thankful to the Endowment Trust for grants totalling £37,905.94 which covered the £19,405.94 shortfall in 2024 of the Project Manager, CPW worker and Parish office costs, details reported in the Treasurers 2024 year-end report.

The remaining £18,500.00 was to cover the shortfall up to the end of September 2024, (£6,030 PM costs, £11,832.50 CPW & £637.50 parish office rent.

We hope to submit a further request to the Endowment Trust for a grant to cover the qtr.4. 2025 short fall for the Project Management work, CPW worker and Parish Office rent, (PM £2,145, CPW £3,880.51 & £212.50 for Parish office rent. Total £6,238.01)

Many thanks to Hatfield Building trust for a grant of £1,320.00 & Robert Forster's grant.

We would like to take this opportunity to thank you for your generous giving. Your generosity directly supports the worship, mission, and ministry of this parish, enabling us to share the light of Christ in our community and to serve those who rely on the church's presence and care.

Every gift we receive makes a real difference, helping us to keep the church open, to resource our ministry with children and families, to support pastoral work, and to continue proclaiming the gospel here in Hatfield. Please know how deeply grateful we are!

Gift Aid

We would like to thank all Gift Aiders. In April we received £7,621.23 from HMRC for our 2024 Gift aid claim, up by £630.52 on the previous year. We also received a further £2,000 for our Gift aid on small donations.

Gift aid is a tax relief scheme that enables UK taxpayers to make tax efficient savings to Charities and Churches by completing a simple declaration. Gift aid increases the value of your donation by 25% as it enables churches to reclaim the basic rate of tax on your giving at no extra cost to you. If you are a new regular giver to Church and a taxpayer and would like to boost your donation by 25p for every £1 you donate, please ask for a Gift Aid declaration form.

CPW & Resources

Regular and one-off donations in 2025 toward the CPW salary amounted to £6,090.45.

The Diocese of Sheffield contributed £5,550.50 re SMMIB continuation funding.

The Endowment fund paid £10,829.81, the shortfall in 2025 was £3,480.64.

Note. In February 2025 we paid QTR 4 2024 CPW invoice which was for £6,023.19, we had been overcharged for CPW salary Qtr3. Qtr4 2023 & Qtr1. & Qtr2. 2024 they issued a credit note for £4,874 we paid the balance of £1,149.19.

We received a grant of £1,000 from DMBC towards CPW resources and £3,226 was raised through donations, Little Lions and uniform bank activities.

Expenditure

Gas charges were £1,767.69 higher in 2025 than 2024.

The Utility contracts with EDF are coming to an end in 2026.

Technology – a new PC was purchased for the Parish office.

Ministry - £10,822.13 was spent with Charles Farris for superfrontal, candles, lights alter wine, only £8,826.53 was paid in 2025. In 2026, £1,995.60 was paid for Burse, Chalice veil and Lectern fall.

Licences. Over £800 was saved on licence fees in 2025, we had been paying for licences we did not need.

Designated/Restricted Funds

3.12.18 Blanshard Memorial (window) - £632.21

St Lawrence Barn Management Account

Reconciled Bank balance as at 31 December 2024. £15,363.45

Insurance Receipt - **£4,328.99.**

Deposit paid to Zap £885.00

-£3,443.99

Balance

£11,919.46

The Barn Management accounts show a surplus of £3,769.31, after adjusting for the insurance income. This thanks to the rental income from KayDans Childcare and their contribution to the gas and electric bills. A rent review was undertaken in 2025, and their rent was increased by 6.5%.

Several groups hired the Barn for coffee mornings and other events generating additional income.

In November the Barn account made a loan of £4,000 to the PCC to cover the CPW salary invoice, this was repaid in December.

St Lawrence PCC	2025 TOTAL	2024 Total	Variance
	£	£	£
<u>INCOME</u>			
<u>Collections</u>			
Baptism	£123.66	£916.87	-£793.21
Funeral (PCC)	£2,257.37	£4,740.85	-£2,483.48
Funeral (Charity)	£1,001.32	£1,616.05	-£614.73
Services	£7,012.95	£9,524.41	-£2,511.46
Wedding	£360.52	£276.51	£84.01
Total Collections	£10,755.82	£17,074.69	-£6,318.87
<u>Donations</u>			
Cash Envelopes	£2,752.00	£3,397.25	-£645.25
Bankers Orders	£26,718.00	£24,672.00	£2,046.00
Yard Trail	£8.00	£0.00	£8.00
Refreshments	£2,026.20	£0.00	£2,026.20
Other	£2,489.05	£3,398.39	-£909.34
Total Donations	£33,993.25	£31,717.64	£2,525.61
<u>Fees (PCC)</u>			
Funeral	£3,417.00	£3,468.00	-£51.00
Wedding	£1,841.00	£1,576.00	£265.00
Total Fees	£5,258.00	£5,044.00	£214.00
<u>Fees For Passing On To The Diocese</u>			
Funeral	£8,755.00	£8,214.00	£541.00
Wedding	£2,197.40	£1,949.51	£247.89
Total Fees	£10,952.40	£10,163.51	£788.89
<u>CPW & PM</u>			
CPW Salary	£6,090.45	£10,542.33	-£4,451.88
CPW Resources	£4,226.49	£5,652.84	-£1,426.35
PM Contributions	£0.00	£0.00	£0.00
Total CPW & PM	£10,316.94	£16,195.17	-£5,878.23
<u>Grants</u>			
HC Building Trust	£1,320.00	£0.00	£1,320.00
Endowment Trust	£37,905.94	£12,089.16	£25,816.78
Dunscroft Church	£0.00	£0.00	£0.00
SDBF	£0.00	£100.00	-£100.00
Robert Forster	£250.00	£250.00	£0.00
Total Grants	£39,475.94	£12,189.16	£27,036.78
<u>Fundraising</u>			
Yard Trail	£151.20	£173.81	-£22.61
Plant Sale	£0.00	£5.00	-£5.00
Garden Party	£2,337.00	£2,561.97	-£224.97
Cake Sale / Refreshments	£0.00	£1,879.96	-£1,879.96
Trumpet Concert	£555.20	£0.00	£555.20
Strawberry Tea	£0.00	£230.00	-£230.00
Spring Fayre	£0.00	£1,081.70	-£1,081.70
Christmas Fayre	£1,339.51	£0.00	£1,339.51
Other	£3,082.47	£3,207.44	-£124.97

Total Fees	£7,465.38	£9,139.88	-£1,674.50
<u>Other Income</u>			
Admin	£411.89	£1,505.82	-£1,093.93
Gift Aid	£9,621.23	£8,990.71	£630.52
			-
Insurance Claim	£0.00	£10,640.00	£10,640.00
Legacy	£0.00	£5,000.00	-£5,000.00
Magazine	£952.95	£1,029.55	-£76.60
Transfer In	£201.30	£5,862.51	-£5,661.21
VAT Claim	£1,171.51	£3,127.38	-£1,955.87
Total Other Income	£12,358.88	£36,155.97	-£23,797.09
TOTAL INCOME	£130,576.61	£137,680.02	-£7,103.41
<u>EXPENDITURE</u>			
<u>Common Fund</u>			
SDBF	£43,970.04	£42,689.04	-£1,281.00
Total Common Fund	£43,970.04	£42,689.04	-£1,281.00
<u>Church Premises</u>			
Parish Office Rent	£850.00	£850.00	£0.00
Insurance	£8,189.46	£7,974.60	-£214.86
Electric	£3,747.65	£4,058.13	£310.48
Gas	£7,076.97	£5,309.28	-£1,767.69
Water	£136.69	£117.79	-£18.90
Internet	£262.08	£259.26	-£2.82
Technology	£1,706.10	£2,724.61	£1,018.51
Scheduled Maintenance/Services	£3,036.47	£2,446.27	-£590.20
Ad-Hoc Repairs	£1,511.22	£13,626.53	£12,115.31
Total Church Premises	£26,516.64	£37,366.47	£10,849.83
<u>Vicarage Premises</u>			
Water Rates	£814.02	£462.32	-£351.70
Total Vicarage Premises	£814.02	£462.32	-£351.70
<u>Fees</u>			
SDBF	£2,272.00	£2,485.00	£213.00
Workers	£6,848.00	£6,988.00	£140.00
Received on behalf of other Churches	£0.00	£0.00	£0.00
Total Fees	£9,120.00	£9,473.00	£353.00

CPW & PM			
CPW Salary	£16,751.65	£19,804.08	£3,052.43
Expenses (Direct)	£1,269.36	£1,069.85	-£199.51
Expenses (Messy Church)	£564.29	£400.00	-£164.29
Expenses (Children)	£3,795.40	£5,365.74	£1,570.34
PM Costs	£8,760.00	£9,560.37	£800.37
Total CPW & PM	£31,140.70	£36,200.04	£5,059.34
-			
Other Costs			
Admin	£2,974.36	£2,295.55	-£678.81
Bank Charges	£449.92	£231.84	-£218.08
Clergy Expenses	£1,735.68	£764.02	-£971.66
Magazine	£0.00	£1,320.00	£1,320.00
Ministry	£10,448.64	£1,626.31	-£8,822.33
Mission	£0.00	£194.76	£194.76
Licences	£265.23	£809.37	£544.14
Fundraising paid to charities	£3,357.96	£2,633.49	-£724.47
Transfer out to Barn Account	£0.00	£0.00	£0.00
Total Other Costs	£19,231.79	£9,875.34	-£9,356.45
TOTAL EXPENDITURE	£130,793.19	£136,066.21	£5,273.02
NET INCOME	-£216.58	£1,613.81	£1,830.39
Opening Bank Balance	£22,752.10	£21,138.29	£1,613.81
Closing Bank Balance	£22,535.52	£22,752.10	-£216.58

Barn	2025 TOTAL	2024 Total	Variance
	£	£	£
<u>INCOME</u>			
<u>Grants</u>			
DMBC Grants	£0.00	£0.00	£0.00
Total Grants	£0.00	£0.00	£0.00
<u>Other Income</u>			
Rents Income	£402.50	£770.00	-£367.50
KayDans Childcare Rents Income	£7,815.35	£7,280.47	£534.88
100 Club Subscriptions	£0.00	£528.00	-£528.00
Cash In	£4,378.99	£278.06	£4,100.93
Transfer in from PCC Account	£4,000.00	£720.00	£3,280.00
Total Other Income	£16,596.84	£9,576.53	£7,020.31
TOTAL INCOME	£16,596.84	£9,576.53	£7,020.31

EXPENDITURE**Barn Premises**

Insurance	£638.20	£674.44	£36.24
Rates	£136.23	£48.99	-£87.24
Gas	£490.20	£519.06	£28.86
Electric	£425.05	£402.68	-£22.37
Water	£305.04	£259.11	-£45.93
Facilities - Scheduled Maintenance	£1,100.00	£310.51	-£789.49
Facilities - AdHoc Repairs	£2,241.69	£1,472.15	-£769.54
Total Barn Premises	£5,336.41	£3,686.94	-£1,649.47

Other Costs

Bank Charges	£47.13	£72.58	£25.45
Transfer out to Barn Regen Account	£0.00	£504.00	£504.00
Transfer out to PCC Account	£4,000.00	£3,778.06	-£221.94
Total Other Costs	£4,047.13	£4,354.64	£307.51

TOTAL EXPENDITURE	£9,383.54	£8,041.58	-£1,341.96
--------------------------	------------------	------------------	-------------------

NET INCOME	£7,213.30	£1,534.95	£5,678.35
-------------------	------------------	------------------	------------------

Opening Bank Balance	£8,150.15	£6,615.20	£1,534.95
-----------------------------	------------------	------------------	------------------

Closing Bank Balance	£15,363.45	£8,150.15	£7,213.30
-----------------------------	-------------------	------------------	------------------

This Financial Report was approved by email circulation of the PCC on Tuesday 7th April.

The Financial statements have been independently audited & found to be properly prepared, there are no matters of concern, and the auditor is satisfied that the accounts comply with the required framework for charities.

Signed

C. Bishop
The Revd Chris Bishop
Vicar

J. Hemmings
Julie Hemmings
Treasurer

Electoral Roll Report

Electoral Roll Report

In accordance with Church Representation Rules, the Electoral Roll has been revised during the past year.

- Number on the Roll at the last APCM: **95**
- Additions during the year: **6**
- Removals during the year: **1**
- Total on the Roll at this APCM: **100**

The Electoral Roll continues to reflect a growing and diverse worshipping community at St Lawrence, with new members joining us through worship, pastoral offices, and community ministries such as Café Church, Little Lions, and Lawrence's Place.

Electoral Roll Officer: Glenys Mashford