

ST LAWRENCE CHURCH

Hatfield, including Dunscroft, Dunsville,
Hatfield Woodhouse and Lindholme



What does the Lord require of you but to do justice,
to love kindness and to walk humbly with your God?

Micah 6: verse 8

February 2026 50p

Church Officers	Local Information
<p>Vicar The Rev'd Chris Bishop Tel: 07946 118 230 Email: father.chris@outlook.com</p> <p><i>The church is not a postal address but the postcode for SatNavs is DN7 6HN, what three words is caressed.ports.heartless</i></p> <p>Associate Priests The Rev'd Gill Salter Curate The Rev'd Chris Wroot Priest with PTO The Rev'd Joyce Barker Readers with PTO Beryl Adamson Viv Stubbs</p> <p>Organist Vernon Hoyle tel: 07486 895608 vernonhoylemusic@yahoo.com</p> <p>Youth, Children's and Families Worker Rachel Ridler tel: 07851 991286 rachel.ridler@centenaryproject.org.uk</p> <p>Parish Office tel: 01302 350591 email: hello@hatfieldstlawrencechurch.com</p> <p>Church Wardens Terry Raper tel: 07980 378475 Chrissy Grindle tel: 07842 513695, please text initially</p> <p>PCC Secretary Shaun Holt email: shaunholt@gmail.com</p> <p>Electoral Roll Officer Glenys Mashford tel. 01302 841852</p> <p>PCC Treasurer and Giving Director Julie treasurerhatfieldstlawrence@outlook.com</p> <p>Chair and contact for all Social & Fundraising events Sennette Wroot email: sennette67@gmail.com</p> <p>Housekeeper Freda Thubron email: freda2mick@yahoo.co.uk</p> <p>Barn bookings Anne Render tel: 07977 142001</p> <p>Safeguarding Officer Viv Stubbs tel. 01302 846318</p>	<p>Childline tel. 0800 1111</p> <p>South Yorkshire Police Emergency 999 or 112 Non-emergency 101</p> <p>Hatfield Health Centre tel. 01302 897600</p> <p>Out of Hours Doctor tel.01302 761172</p> <p>Homestart tel. 01302 340856</p> <p>Family Lives tel: 08088 002222</p> <p>Bus help line tel: 01709 515151</p> <p>Travis St Lawrence C of E Primary School Lower School tel. 01302 840200 Upper School tel. 842164</p> <p>Roman Catholic Priest Roman Catholic Priest: Fr Joseph Okeke tel: 01405 812248 Parish Mobile Phone: 07714 793120</p> <p>Methodist Minister Mrs Liz Worsley Email: elizabethworsley17@gmail.com tel:01302 210286, 077771 92212</p> <p>Weldricks Pharmacy Ash Hill Road tel : 01302 842799</p> <p>Funeral Directors Charles Carpenter Funeral Services tel. 01302 841679</p> <p>B A Wright & Sons tel. 01302 841296 tel. 01302 880450</p> <p>Wade's Funeral Service tel. 01405 812966</p> <p>Magazine Editor Chrissy Grindle maghatfieldchurch@gmail.com</p>

February..

is named after the Latin term februum, which means purification.



The birthstones for February are amethyst and bloodstone.

The birth flower for February is the violet, which represents faithfulness and loyalty.



The oldest known Valentine's Day card is on display at the British Museum in London and was sent in the 1700s.

The first Winter Olympic Games were held in February 1924 in Chamonix, France.

Leap years add an entire day to the month of February. It's because our calendar years sometimes get out of sync with the time it takes for the Earth to orbit the sun, forcing us to align them by adding one full day every four years.

*My dear Lord, I thank you for waking me to see
the light of this new day.*

*Grant unto me to waste none of its hours,
soil none of its moments,
and neglect none of its opportunities.*

*And bring me to the evening time,
undefeated by any temptation.*

At peace with myself, with others, and with you.

I ask this in Jesus' name. Amen

Letter from the Vicarage

As we step into February, I find myself looking back over the past weeks with a deep sense of gratitude and humility.

Christmas in Hatfield felt like a season where grace overflowed in ways both gentle and unmistakable.

Across all our services we saw a real rise in attendance, and our new 8pm “Early Midnight Mass” on Christmas Eve gathered around a hundred people, far more than we imagined for its first outing.



There was a warmth and reverence in the air, that quiet awe that only Christmas Eve seems able to hold, and it felt as though the whole parish breathed in the wonder of the Incarnation together.

Christmas was what it was because you gave yourselves to it. Our clergy, lay officers, musicians, welcomers, readers, intercessors, decorators, cleaners, coffee makers, tech helpers, and so many volunteers offered their gifts with generosity and joy. You made the gospel visible in the way only a church family can. As St Teresa of Ávila once said, “Christ has no body now but yours.” Thank you for being His hands and heart in this place.

January then carried us into the season of Epiphany, when the Church proclaims Christ revealed to the nations. One of the loveliest moments for me was watching our Curate chalk the doors of St Lawrence. A simple, ancient sign that Christ’s blessing rests on this house of prayer and on all who cross its threshold. It reminded me again how our Anglican liturgical tradition holds together the ordinary and the holy: outward signs pointing to inward grace, simple actions carrying deep truth. God speaks through the ordinary, and He certainly speaks through this parish.

Soon after, we celebrated the Baptism of Jesus and heard again the Father’s voice: “You are my beloved.” Before Jesus preached, healed, or taught, he was loved, and that truth sits at the very heart of our reformed evangelical tradition. Grace comes first. We do not earn God’s love; we receive it. The next week we joined Christians across the world in the Week of Prayer for Christian Unity. Unity is not sameness; it is standing together under Christ, each bringing our gifts for

the sake of His kingdom. John Wesley's words ring true: "In essentials, unity; in non-essentials, freedom; in all things, love."

As January turns to February, we approach Candlemas, that beautiful hinge in the Church year when we remember Christ as "a light to lighten the nations." Candlemas always feels to me like a moment of quiet courage: we hold our candles in the winter darkness and proclaim that the light shines on, and the darkness has not overcome it. It is a feast that gathers up the best of our Anglican inheritance, the evangelical proclamation of Christ as Saviour, and the drama of liturgical action in beauty, symbol, and sacrament.

Looking ahead, we have our Valentine's Celebration on Saturday 14th February at 3pm a short, warm service celebrating love, followed by refreshments. It's more than a pleasant event; it's a gentle missionary moment. A chance to invite a neighbour, a couple you know, someone who's been hovering on the edge of church life, or someone who simply needs to know they matter. In the spirit of Epiphany, it's our way of saying, "Come and see."

Lent begins soon after, with our Parish Pancake Party at 5pm, followed by the first session of our Lent course, Talking Jesus, on Tuesday 17th at 7pm. I want to encourage you warmly to join us. It's practical, hopeful, and wonderfully down-to-earth helping us speak about Jesus in ways that are natural, kind, and confident. Charles Spurgeon once said, "You are the only Bible some people will ever read." This course helps us live that truth with grace.

Alongside this, we launch our Growth Groups, small, friendly gatherings where we pray, learn, and grow together. These groups sit right at the heart of our mission: disciples becoming more like Jesus, supporting one another, and living out the gospel in daily life.

As we move through February, I'm struck by how much God is inviting us to grow. In worship, in unity, in confidence, in mission, in community, and in love. From Christmas crowds to chalked doors, from Candlemas candles to pancake parties, from Valentine's invitations to Lent courses, God is giving us countless opportunities to deepen our faith and share it with others in our lively and growing church!

Thank you for being part of this journey. Thank you for your prayers, your presence, your generosity, and your hope. Let's keep walking forward together, trusting the promise St Paul gives us:

"He who began a good work in you will bring it to completion."

With every blessing,

Fr Chris

Vicar of Hatfield

Arrangements for Baptism (Christening) and Weddings

St Lawrence would love to celebrate your special day with you and your family. The first step in arranging a Baptism or a Wedding is to attend one of our services. Please introduce yourself to Chris our Vicar, who will speak with you about the next steps.

These are joyful and life changing events! Both require making serious promises before God and some preparation will take place before a date can be set.

Another option for Parents is a 'Thanksgiving Service' rather than a Baptism. This is a great way to celebrate the gift of a child with family and friends for those who aren't quite sure about God, but would still like to thank Him for the gift of a new life! Thanksgiving Services can be booked directly with Chris our Vicar and don't require any preparation.

Weddings

Ashley Jones and Helen Berriman

Funerals

John Hickman
Patricia Amy Walker
Elizabeth Humphries
Jayne Magee
Charles William Carpenter



Chris our Parish Priest is very happy to be contacted directly by email or phone to arrange a convenient time for any of the following;

- A conversation for spiritual guidance and advice
- The Sacrament of Confession
- House Blessings
- Visiting parishioners, especially the sick
- Ministry at the time of death (day or night)



Can you help?

**Can you spare 1–2 hours on a
Thursday afternoon?**

Little Lions toddler group needs you!

What we need

- Help setting up
- Serve tea and coffee to grown ups
- Make snack for toddlers
- People as a friendly face to talk and play
- Help to tidy away



**Speak to Joy Bishop
if you can help**

Text on 07891826639
Email on
joybishop_vicarage@outlook.com



Diary of a Youth, Children's and Families Worker

It seems as though January has hardly started by the time I'm writing this! It was a very busy December here at Hatfield Church for our children and young people. We kicked it off with a mammoth gift wrapping session at Lawrence's Place Community Café, with Hatfield Heroes helping out the local community by wrapping presents. They wrapped all the gifts for Santa's grotto and for Little Lions Christmas Party this year, as well as many others. Then they went on to narrate the Christmas Eve services too, and earned Dominos Pizzas! And there were lots of Domino's Pizza ordered and eaten to celebrate the end of our Youth Alpha Course at Ash Hill Academy (although we are going to continue this group after Christmas as they have loved it so much!)



I went to three Christingle Services – Travis Year 1 in church, Sheep Dip whole school in their hall, and our own lovely Family Christingle in church. At our Family Christingle it was lovely to be able to share a Christmas Assembly by our Open the Book Team. I hope that those attending were able to get a glimpse into the work that this team does serving local children by going into schools and acting out Bible stories, I suspect the adults going in enjoy it as much as the students!

(A glimpse of the Christingle service at church can be found on https://www.facebook.com/reel/2360830914352395?locale=en_GB)

After all that you might think that I am a little exhausted, but I'd love to share a couple of highlights with you all that might energise us as we get going in the new year. When discussing the Holy Spirit at our Youth Alpha Course, one young person shared that she had felt a feeling of warmth when she has been at church and recognised it as the presence of the Holy Spirit. Another shared that he had felt prompted to help other children in his class by the Holy Spirit before too. ***I wonder how you feel the presence of the Holy Spirit in your life?*** At the end of our alpha videos this term we invited young people to pray "Come Holy Spirit" to invite Him into their lives. Maybe that can be our prayer for 2026 in all that we do – especially as we see this next generation growing in faith.

God Bless and wishing you all an amazing New Year.



Rachel Ridler

**Youth, Children's and Families Worker at St Lawrence Church, Hatfield |
The Diocese of Sheffield**

Tel 07851 991286 rachel.ridler@centenaryproject.org.uk

Doncaster Woodturning Club...



... meets twice a month on the second and last Monday of each month. Please check the Woodhouse Village Hall calendar for the current meeting dates, or <https://hatfieldwoodhousevillagehall.org.uk>

Anyone who is interested in learning about woodturning is welcome to join us. Club members are more than willing to take newcomers under their wing and explain the club's activities. They have three meeting formats:

- Skills nights - where you can come along and learn how to get started with woodturning, or brush up your skills, or even learn a new skill. They usually have at least 5 lathes set up for members to use, with several registered tutors.
- Demonstration nights - where a professional turner comes along and demonstrates his skills to the assembled club members.
- Zoom session on non-club nights, usually with 2 members each working on a project (may not always happen).

Current fees are £3.00 for Skills nights and £6.00 for Demonstration nights (although your first two demo nights are free). Annual subscription fee is £30 which includes membership of the Association of Woodturners of Great Britain (AWGB).

Tea and coffee (with biscuits) is available mid-evening for a nominal charge of 50p.

Come and join us for a friendly chat at any of our meetings, just turn up and introduce yourself. All are welcome – ladies, gentlemen as well as accompanied boys and girls.

If you require any further information, please contact the numbers below:
Roger – 07846 500679
Tony – 07903 325949

CHURCH IN WINTER

I am bitterly cold, Lord, in your pews.
Yes, Lord, freezing cold, shivering through and through.
Yet your love warms me and connects me to you.

I sing the best I can, Lord, even when my
breath covers the air
and drifts straight to you, Lord on the heavenly stair.

People of yesteryear must not have been so cold,
they had no heating, no fur coats or waterproofs
but thin clothing covered in mould.

Oh! Springtime, how long will it be,
warm my aching bones and my hymns
won't be so wobbly.

Summer, autumn and November comes
and it's time for heating the church again, crumbs!

Heating is switched on and fingers crossed.
Will the unpredictable boiler work?
or is it blankets, hats and gloves keeping
us warm from Jack Frost?

Thanks for this lovely poem Anita, how apt for this weather! We all long for our hymns to be less wobbly too! Thank you to all the people who created the blankets that are used in church, they are more than just an extra layer, they speak of time and care given.

The heating in church is an old system, it did break down when we re-started it in the autumn but was mended promptly. It is inefficient for the size of the building and expensive to run, fuel costs were very different in 1991 when it was installed. But of course heat rises and we need to heat the people, not the top level of the church! So you are most welcome to bring a hot water bottle or hand warmers, grab a blanket, and sit near the front!

Ash Wednesday Invitation - Wednesday 18th February

Lent begins on **Ash Wednesday**, a day when the Church invites us to return to God with honesty, humility, and hope.

As in Advent, we will once again **re-orient our worship eastward** priest and people facing the same direction, towards the rising sun. This ancient posture expresses our shared longing for Christ. It reminds us that worship is not a performance but a pilgrimage: all of us turning together toward the Lord.

Then, at Easter, the priest will turn **westward** to proclaim the Resurrection! Facing the world, facing the darkness with the light of Christ. These two orientations belong deeply to the Anglican tradition:

- **Facing East** expresses waiting, longing, repentance, and hope.
- **Facing West** expresses proclamation, joy, mission, and the sending-out of God's people.

We use both because the gospel is both: a turning toward Christ, and a turning outward in His name.

During Lent you will also notice that **the flowers are removed from church**. This is not about making the building look bare for its own sake. It is a gentle, visual way of helping us enter the season's simplicity. Flowers return at Easter because they speak of resurrection, joy, and new life. Their absence in Lent helps us feel the contrast so that when the church bursts into bloom again, the message of Easter is not only heard but seen!

10.00am – “The Commination”

Our morning service will be the **Communion** from the **Book of Common Prayer**, one of the oldest and most solemn services in Anglican worship. Its purpose is deeply biblical: to help us acknowledge our need for God's mercy and to turn again to Him with sincerity of heart. The language is traditional, beautiful, and steeped in Scripture. It reminds us that repentance is not about fear or shame, but about coming home to the God who is “full of compassion and mercy, long-suffering and of great goodness.” For those who appreciate the depth and dignity of classic Anglican worship, this service offers a quiet, reflective start to Lent.

6:30 pm – Sung Holy Communion with the Imposition of Ashes

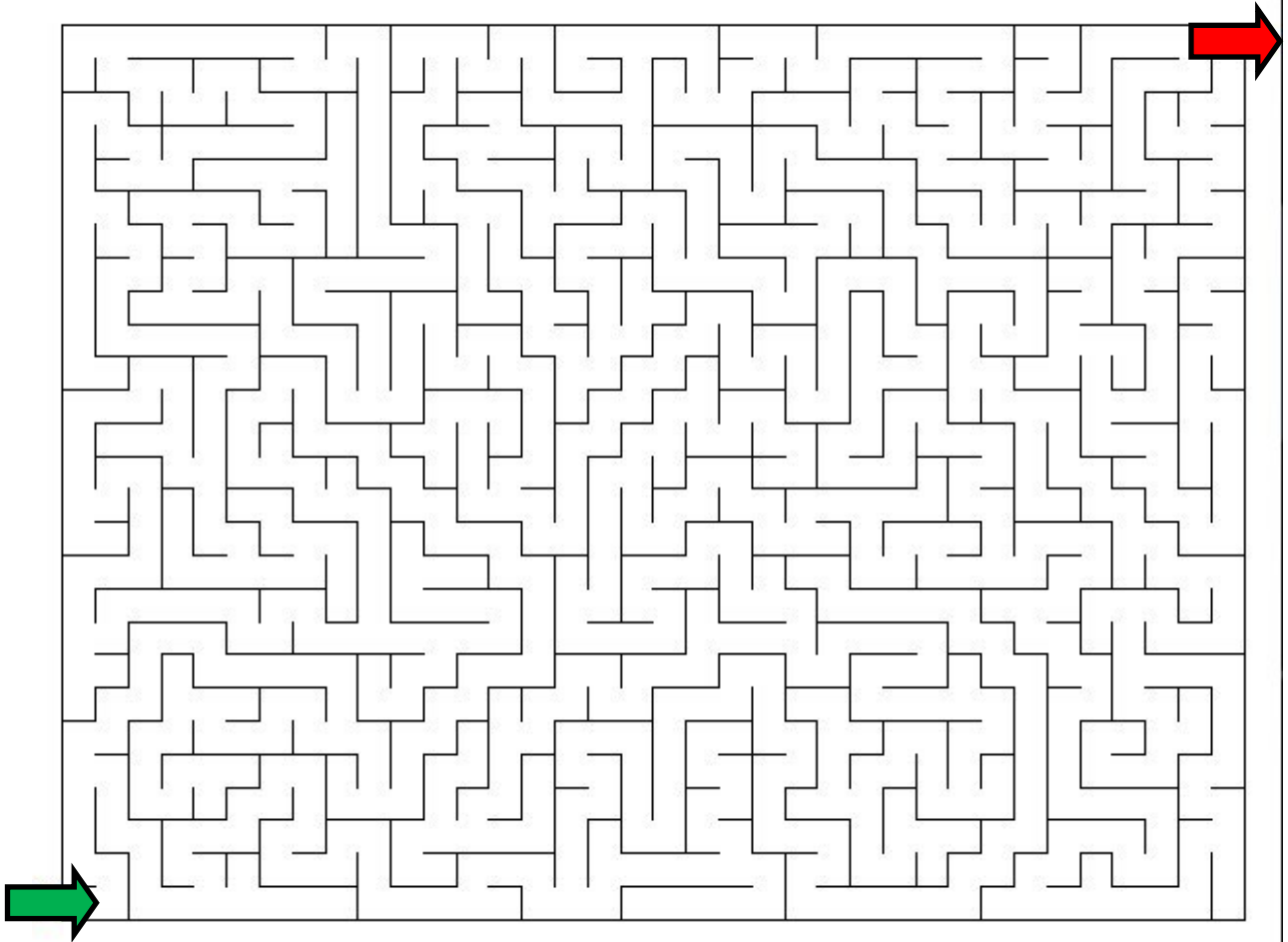
In the evening we gather for a fuller, sung service. During this service, there will be the **imposition of ashes**: a simple cross traced on the forehead. This ancient sign speaks two profound truths:

our human frailty: “Remember that you are dust...”

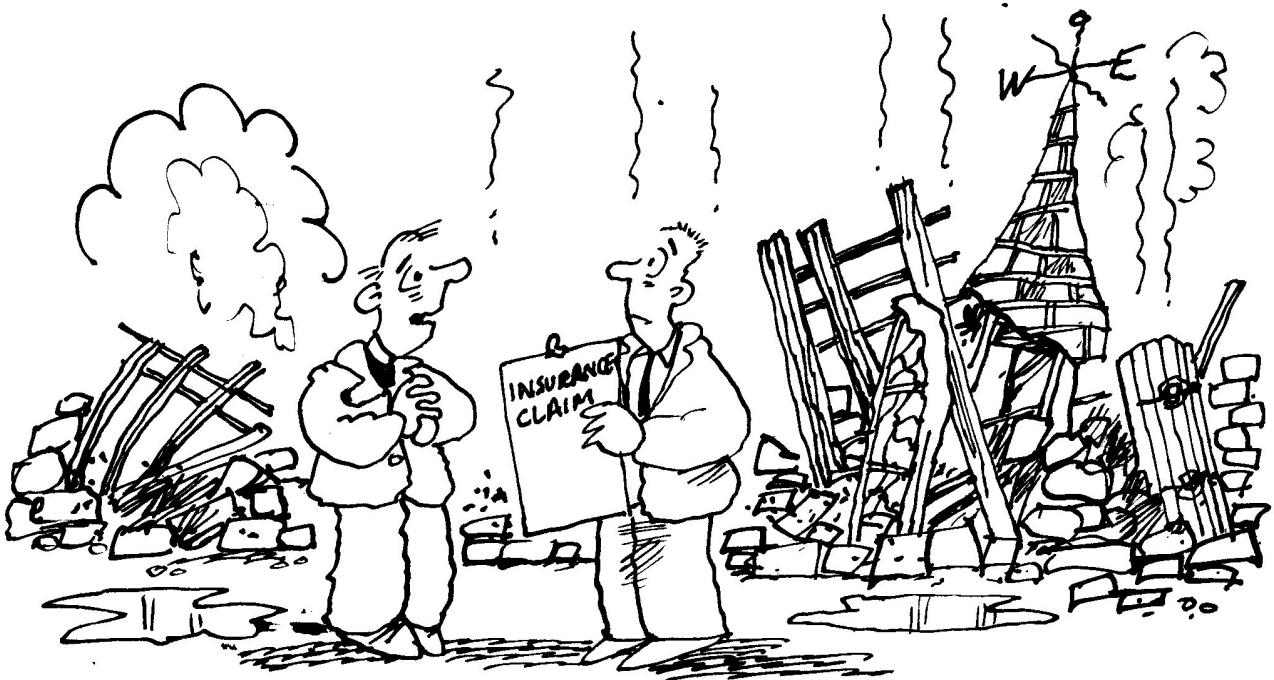
our hope in Christ: “...and to dust you shall return.”

The Ashes are a sign of grace, a way of saying, “Lord, I turn again to you.” This is one of the most moving services of the Christian year. Whether you come in the morning, the evening, or both, I pray you will find space to breathe, to reflect, and to receive God's renewing love. Lent is not about gloom, it is about returning to the God who calls us beloved and walks with us through every wilderness.





A puzzle that didn't make January's magazine!



"apart from this little hiccup it was an excellent church pancake supper"



Each MONDAY coffee afternoon 13:30 -15:00 Hatfield Woodhouse Methodist

Each WEDNESDAY coffee after church at St Lawrence, Holy Communion at 10, chat, coffee, light a candle, sit quietly, 11-12:00

Each WEDNESDAY coffee morning 10-11:30 at Stainforth Methodist

Each THURSDAY coffee morning 10-11:30 at Dunsville Methodist, Greens Road.

Each THURSDAY chair exercise group 13:30-14:30 at Hatfield Woodhouse Village Hall

Each SATURDAY 10-12 coffee morning Hatfield Woodhouse Methodist church

Every second and last Monday of each month, Doncaster Woodturning Club... see page 10. Woodhouse Village Hall.

Tuesday Garden Club, 19:30 Working Men's Club at Hatfield Woodhouse (every first Tuesday)

Thursday Stainforth History Group 19:00 Stainforth Methodist Church (every first Thursday) You don't have to be a member to come to this friendly group, there's a remarkably small entrance fee to cover costs, and you will be made most welcome!

Every second Saturday coffee afternoon 14:00-15:3– Dunsville Methodist Church Greens Road

Hatfield Woodhouse Methodist Chapel Charity Coffee Afternoons



We can now accommodate dog walkers outside (our new table and chairs) and if it is raining in the back room.

Weekly Pop up stalls are back if you want to book, please see Mandy so call in any Saturday Morning when we can arrange a date for you.

[Artwork Vectors by Vecteezy](https://www.vecteezy.com/free-vector/artwork)

January

Monday 26th Hatfield Woodhouse Methodist Church Charity Coffee Afternoon in aid of Alzheimer's Association Raffle @ 1.30pm

February

Monday 23rd Hatfield Woodhouse Methodist Church Charity Coffee Afternoon in aid of Firefly Cancer Awareness with stalls, raffle & tombola £3.50 cake & a drink **1 till 3pm**

14th Saturday Coffee morning in the Barn 10-12 in aid of Cancer Research. Raffle, tombola and home-made baking much appreciated, but you getting there is more important!

There will be a coffee morning on the second Saturday of each month in the Barn so watch this space, or book one of those Saturdays for YOUR charity!

**14th Saturday
Valentine's
Celebration on
Saturday 14th
February at 3pm
in church, a
short, warm
service
celebrating love,
followed by
refreshments, an
ideal opportunity
to invite some-
one, whether you
love them dearly
or not!**



17th Tuesday Parish Pancake Party at 5pm

17th Tuesday the first session of our Lent course, Talking Jesus, at 7pm, come and find out why we do, and how we do talk about Jesus! The evening will run weekly through Lent.

“People are coming to faith amidst the 'darkness' of crises around the world”...

... so say several Church of England bishops. They believe that increasing numbers of people have been turning to the Christian faith.

The Bishop of Rochester, Jonathan Gibbs said: “Something is going on. Or rather, God Himself seems to be up to something – way beyond what we as Christians have been doing to share the message of the gospel with the people around us.

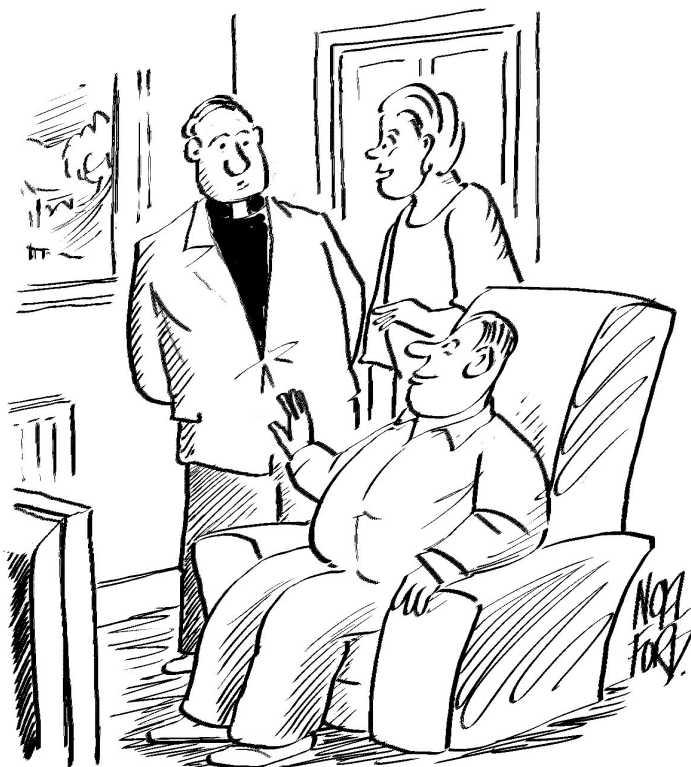
“Humanly speaking, I believe this is happening because people have begun to realise that the things in which they had placed their hopes – things like ever-increasing prosperity or the ability of science and technology to solve all our problems – have started to crumble in the face of economic crises, global pandemics and climate change.”

The Bishop of Gloucester, Rachel Treweek said: “As I have listened to the voices of children, young people and adults across this diocese; the voices in Westminster, and indeed in prisons; I believe there is a yearning for certainty amid the turbulence, anxiety and uncertainty, and the endless messaging of crises.”

The Bishop of Chichester, Martin Warner, speaks of joyful celebrations of baptisms and confirmations in his Diocese and new congregation members at Chichester Cathedral.

“A new generation attending Chichester Cathedral have shifted the atmosphere,” he said. “Buggies now take their place alongside the Zimmer frames, to the delight of everyone.”

From Parish Pump February 2026



“Henry is making a real effort for Lent—he’s giving up the remote and walking to the tv!”

Monday 23rd of February - 1pm to 3pm

Hatfield Woodhouse Methodist
Church's

Fundraiser for



Stalls & Tombola

A Raffle - Tickets are £1 a strip

Choice of a Drink & Cake - £3.50



Rachel only needs £168 to buy new cupboards, ***that's 168 of us giving her £1***, or 84 £2, 42 people giving £4, go on, you work it out, how many people giving her £8... She's grateful for any money at all!!

And gift aid it, see p19!!

The Friends of Hatfield Church Building Trust

Happy new year everyone! We hope it will be a good one for you all.

We ended 2025 quite well with our jewellery sales, **£56** taken at Sarah Jane's Coffee Shop in Dunsville over a week or so in December and **£37.50** from Hatfield Community Library Christmas Fair on Friday 28th November. Many thanks to Sarah Jane's and the staff at Hatfield Library for being so helpful and welcoming. Sadly, we didn't make it to the Church Christmas Fayre on Sat 29th Nov with 2 volunteers unable to help and the heating not working, brrrr.

We are still collecting jewellery, watches, old foreign currency, mobile phones, used stamps and cameras but are **very low on jewellery stock** so please remember us if you have any costume jewellery to dispose of. Another sack of donated items has just gone off to be recycled, we look forward to receiving the proceeds soon.

The lovely group from **Hatfield Woodhouse Methodist Chapel** are holding a Coffee Afternoon in aid of The Friends on **Monday 23rd March from 1.30pm** in the Chapel so please come along to support it, there's plenty of free parking at the Chapel. There'll be a raffle and a small selection of jewellery for sale.

We will also be holding another **Coffee Morning in Hatfield Community Library on Saturday 25th April** from 10am to 12 noon so look out for more information later.

Information – You can become a 'Friend' for a minimum donation of £5 per year. These subscriptions are the backbone of our fundraising efforts with all funds raised going only to maintain, conserve and restore our wonderful Grade 1 Listed building and grounds. Anyone can join us. For more information and to pay Membership renewal fees please contact **Jean Singleton, Eastby, Cuckoo Lane,** Hatfield, Doncaster, DN7 6QE. Tel 01302 842363.

Tina O'Hallloran

“The government give money away willingly”

Yes really, but before you rush for Harrods catalogue the government aren't that silly... they limit it to what you give away to a charity, and **only if you pay tax**. Not give to your friends or grandchildren, but maybe to the home for elderly cats, out of work donkeys, Kevin Sinfield (and Rob Burrows) charity for MND, RSPB, the local church.... Yes, we're a charity, Registered Charity Number 1127942.

The government do it as we've already paid 25% of that money in tax, and they want to encourage us to give to charities, so they say they won't tax us when we do. We've already paid tax so they give it back, to the charity not direct to you!! **But NOT if you don't pay tax!**

Sooooo... if you gave £4 a week to a charity just sign a paper and not only will the government give your tax to the charity direct and make it worth £5, but the charity is allowed to claim it back for the last 4 years too, PROVIDED that the charity knows you've given it to them, in a way it can be checked. It's really that simple, and it doesn't need to be a regular amount.

If you want to do that for your church giving please take a form which is in church, once you've completed the form either set up a direct debit, or give in a blue envelope with your name and address on. Please don't "just" put it in the collection plate, you're losing out on giving an extra 25%, our wonderful treasurer Julie can't claim if she doesn't know it's you who's given it!



And a HUGE thank you for all you give, we spend as wisely as we can.

***The inventive Friends of Hatfield Church Building Trust , and
see page 18 for what else they're interested in re-using!***

**Recycle
and raise
funds for...**



**Wanted!
Your old Cameras**



• Digital • Film • Video • Cinecameras • Hi-8 • Super 8, etc

Any age. Any condition

**Just hand them to a member of staff and we'll do the rest.
We are working with our partners Recycling For Good Cause
to put them to good use and raise much needed funds.
Your donations help us to continue our vital work.**

A prayer for when life seems less than positive...

My Lord God,

I have no idea where I am going.

I do not see the road ahead of me.

I cannot know for certain where it will end.

Nor do I really know myself,

and the fact that I think I am following your will

does not mean that I am actually doing so.

But I believe that the desire to please you does in fact please you.

And I hope that I have that desire in all that I am doing.

I hope that I will never do anything apart from that desire.

And I know that if I do this you will lead me by the right road,
though I may know nothing about it.

Therefore will I trust you always though

I may seem to be lost and in the shadow of death.

I will not fear, for you are ever with me,

and you will never leave me to face my perils alone.

*“The Merton Prayer” from [Thoughts in Solitude](#) by Thomas Merton.
Copyright © 1956, 1958 by The Abbey of Our Lady of Gethsemani.*

100 Club and Vera's chatter

December 2025

1st prize Carol Ray
2nd prize Anne Render
3rd prize Mary Leggott

January 2026

1st prize Catherine lister
2nd prize Debbie Corbett
3rd prize Gill Atkinson

New year, new winners, the same message, enjoy a little treat. If you would like to join the 100 Club which is a fund raiser for the Barn Extension which we are now actively working on, it costs £1.00 a month. There are 8 more draws this cycle so that is £8.00, 1st prize £25.00, 2nd prize £15.00, 3rd prize £10.00. Terry Raper or I will be happy to enrol you. Sadly, several of the original 100 have passed into glory so we really need new members. The new plan is really scaled back but with the same aim: to give us a useable space big enough to house large groups, parties and events. We are delighted to share with you that our young people's group Hatfield Heroes has outgrown the Barn and now meet in Church. Regular worshippers will understand that we are lucky they are young healthy and have inner warmth generated by youth because our Church is rarely warm, wouldn't it be wonderful to have a warm space to offer them! Please join if you can or if Ernie smiles on you build a Barn. Rhys and I are currently attending dancing for Parkinsons at Armthorpe Community Centre so every week I get a full-blown dose of centre envy and anger that Hatfield is so devoid of facilities, surely, we deserve better. Yes, I know Armthorpe benefitted from their mining connections, but we really need a better space.

Onto my second rant, on the back of a compliment, I attended the Health Bus on Wednesday, parked up at Lakeside—excellent experience and service, however I caught my hearing aid in the straps of my mask and threw it in the bin as I happily went on my way. That evening total panic “put your hearing aid in” said Rhys after the 26th “what did you say?” And the awful truth became apparent: the hearing aid was lost. I emailed or phoned everywhere I had visited, left my mobile number with lots of sympathetic people and prayed my best prayers to St. Anthony patron Saint of lost items. We are really good friends, I speak to him frequently! And then I had a call from Kyle at RDASH to tell me the good news, my hearing aid had been found attached to my mask, in the rubbish on the Health bus, my joy was noisy

A word of thanks to everyone who supported the coffee morning on the 10th January in aid of the DN7 Food Bank, we raised £201.10p which will buy quite a lot of food for our clients. If you have a little free time Thursday evening or Friday morning we would love to welcome you into our happy team.

The Barn is available to hire, and we are committed to holding a charity coffee morning on the second Saturday each month, please speak to Anne Render to book your event.

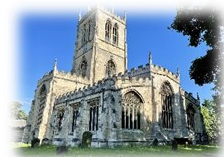
A smile a day keeps the Doctor away unless of course you live with one.
Vera x

“We build on their foundations”... an extra from Vera

Did you notice the beautiful altar flowers in January, Mrs Silvester created the arrangement for us in memory of Mrs Piper, her son Kenneth and Mrs Teena Blanchard, all faithful servants of St Lawrence Church. Mrs Piper was verges when I arrived in 1974 and tolled the bell to call us to worship as well as undertaking a myriad other tasks. Ken taught at Sunday school, was part of our famous flower festivals and led many of the entertainments we put on at Hatfields. You walk past “Ken’s columns “ every time you enter Church as the refurbishment was paid for from Ken’s legacy, he passed the organization of the Autumn Fayre onto me with a breezy “it runs itself!” which was fine while his contemporaries were fit and able! Teena Blanchard was a legend: widowed young she was a much-loved dinner lady at Hatfield Woodhouse school, children adored her, strict but fair, she sold raffle tickets to people who never opened their wallets and begged endless cakes for coffee morning, garden parties, NSPCC and any fund-raiser in between. Strawberry Tea was her invention, she taught me to make lemon curd, ran a house group and always had an open door to anyone in need. Bicycles were left in her garden for collection on the way home from school and her cupboards were like a Rington’s warehouse at Christmas time. I am sure the older members of the congregation could write books about these Christians, we must always remember we build on their foundations.



ST LAWRENCE HATFIELD



When you come into church you will probably see a newsletter for the week on the small table on your right.

Please take one, you’ll know what’s happening plus much more!

BUT... if you could please have it online instead, that would really save the church money over time, and feel free to follow the readings on your phone or a tablet in church.

Of course take one if that’s preferable.

Please give your email address in writing to a welcomer or warden, it will be securely kept according to GDPR, and every week the vicar will send you your e-newsletter with some wise words!!

The Editor's sincere apologies for the non-appearance of the January magazine, she was "proper poorly", but recovered now. Thank you for all prayers and good wishes, they were very heart-warming.

When you edit anything there are some bits that you're extra pleased to put in because you saw it by chance, or think it's extra good, or will make people laugh, or make them think... This was on a WhatsApp group and just right for Epiphany on January 6th, when we remember the Kings arrival at the manger. I've never before associated Christmas with the change from the years BC, Before Christ, to AD, Anno Domini, the year of our Lord. Or BCE, used particularly by non-Christians, Before the Common Era. Read on, and think!

BC:AD

This was the moment when Before
Turned into After, and the future's
Uninvented timekeepers presented arms.

This was the moment when nothing
Happened. Only dull peace
Sprawled boringly over the earth.

This was the moment when even energetic Romans
Could find nothing better to do
Than counting heads in remote provinces.

And this was the moment
When a few farm workers and three
Members of an obscure Persian sect
Walked haphazard by starlight straight
Into the kingdom of heaven.

U. A. Fanthorpe

Thanks to Ali Dorey, Cursillo.



One off cleans

Weekly, Fortnight
monthly

Sarah's Cleaning Service

07563808300

Sarahbridge82@gmail.com

Joining in on Facebook!

You can join Rev'd Gill or Rev'd Chris Wroot on Friday mornings at 8:30 for a short Morning Prayer— 10 minutes
Go to the St Lawrence Hatfield page and try it out!



Please ensure that copy for the magazine is with the editor by the 15th of each month, preferably in writing. This means that the magazine can be put together, printed and collated and in church by the last Sunday in each month, and to be delivered by the time of the first activities in the month.

Copy to
Chrissy Grindle, letter in church or to
60 Station Road, or email:
maghatfieldchurch@gmail.com

Thank you.

Hatfield TV Services

Television Sales & Service, Aerials & Satellite
Installations & Service,
CCTV Security Systems

Ash Hill Crescent, Hatfield,
Doncaster, DN7 6JA

01302 845520



Whatever the Message . . .

Interflora

Lockwoods

Say it beautifully!

☀️ Happy Birthday ☀️ Happy Anniversary ☀️
☀️ Get Well Soon ☀️ Congratulations ☀️

Fresh Flowers with Personal Attention and Guaranteed Service



18 THE GREEN, THORNE

Freephone: 0800 019 0203

www.lockwoodsflorist.co.uk

shop@lockwoodsflorist.co.uk



Worship times

Each Monday to Thursday Morning Prayer at 9:15 in church

Each Friday Morning Prayer on Facebook at 8:30

Each Wednesday 10.00 Holy Communion followed by Open Church from
11.00 – 12.00 join us for coffee, chat, light a candle, quiet prayer.....

Each Thursday 15:00 Holy Communion Service Book of Common
Prayer (BCP)

Sunday 1st February **Candlemas**

10:00 Choral Communion

16:00 Café Church

Sunday 8th February **second Sunday before Lent**

10:00 Choral Communion

Sunday 15th February **next Sunday before Lent**

10:00 Choral Communion

16:00 Café Church

18:30 Worship Service

Sunday 22nd February **LENT 1**

8:30 BCP and Breakfast

10:00 Choral Communion



***Come for
breakfast, whether
you've been to
the 8:30 or the
10:00 service!***



This is the QR (quick response)
code for St Lawrence Church,
There is also a card reader in church for
easy payments towards the mission and
ministry of our beautiful church, and there is
a facility for gift-aiding there too.
But see page 19 too!